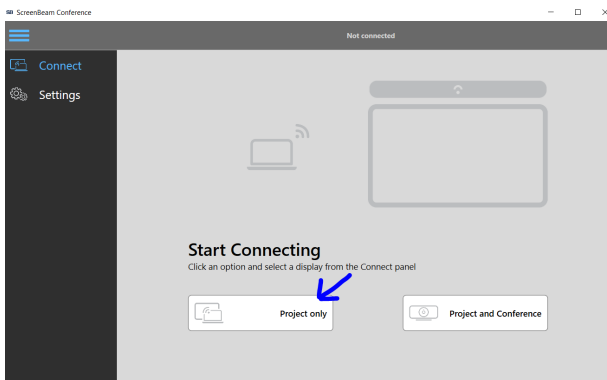


How to use Screenbeam

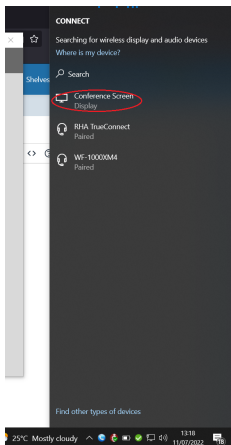
Disclaimer: Screenbeam on Mac OS only allows using the microphone and screen, the camera is not functional.

1. Open Screenbeam from the start menu

2. Select Project Only



3. Select Conference Screen

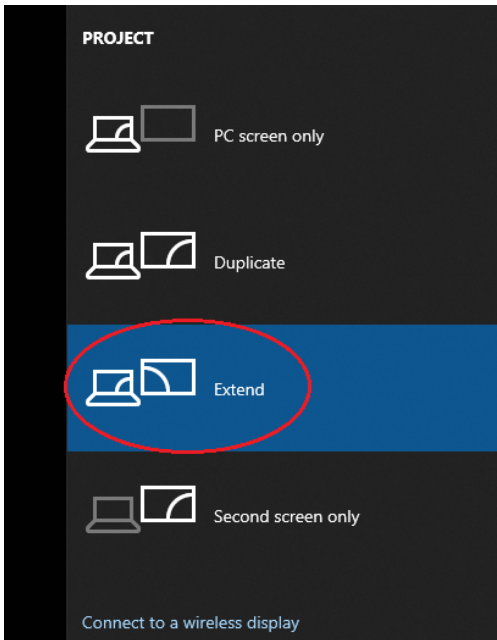


4. Fill in the code displayed on the presenter screen.

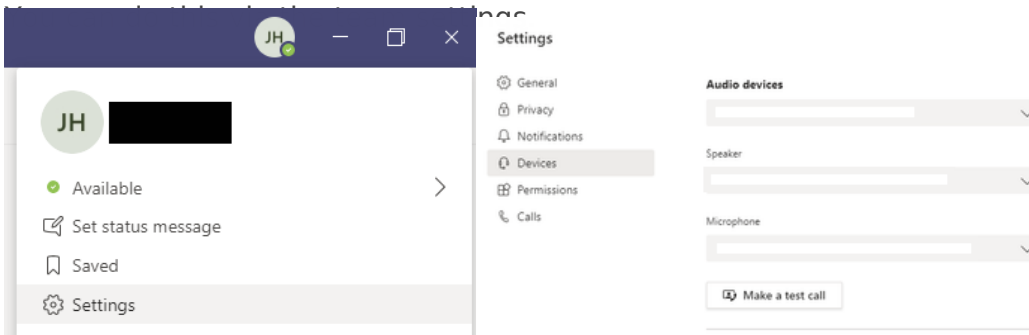
5. You are now connected in Duplicate Screen mode.

6. To set it to "Extend" (EG acts like 2 different screens) you need to press the Windows Key + The Letter P

7. A pop-up should appear, select "Extend", you should now have them as 2 displays, allowing you to drag windows to the presenter screen.



8. To use the microphone/camera, you need to select them to be used in your application of choice EG Teams



In the devices section, select the remote device for audio, speaker, and camera.

NOTE: Disable the background blur if you are using the camera with teams.

Created 2022-07-11 12:17:20 UTC by Harry Green
Updated 2022-07-22 08:28:26 UTC by Harry Green